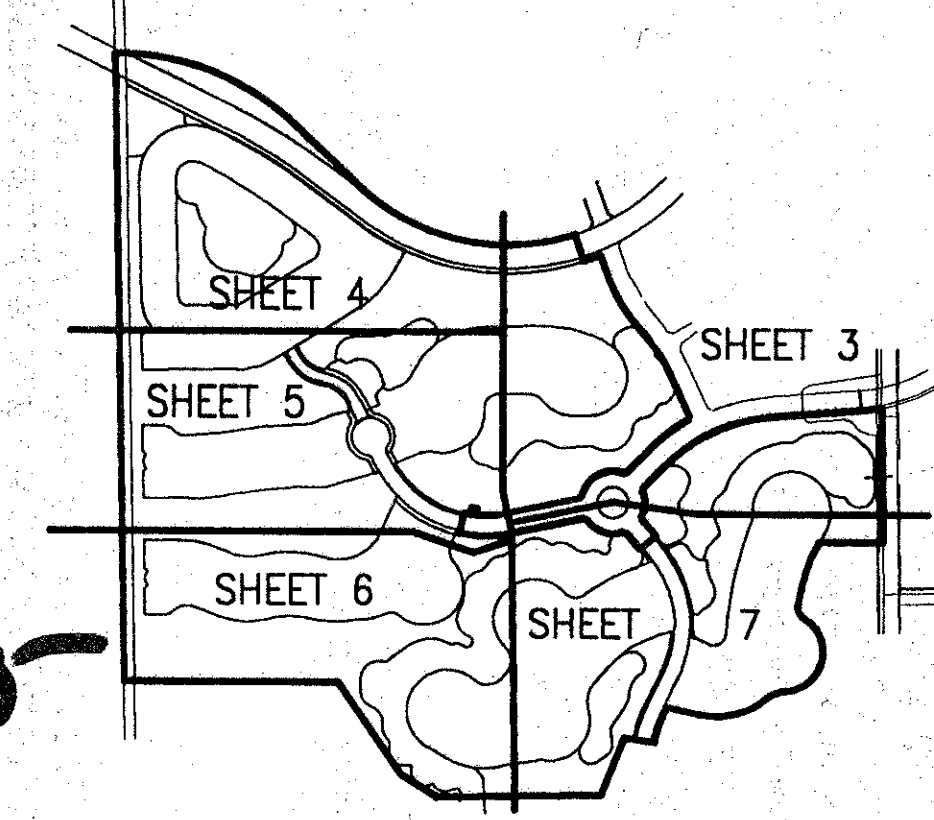


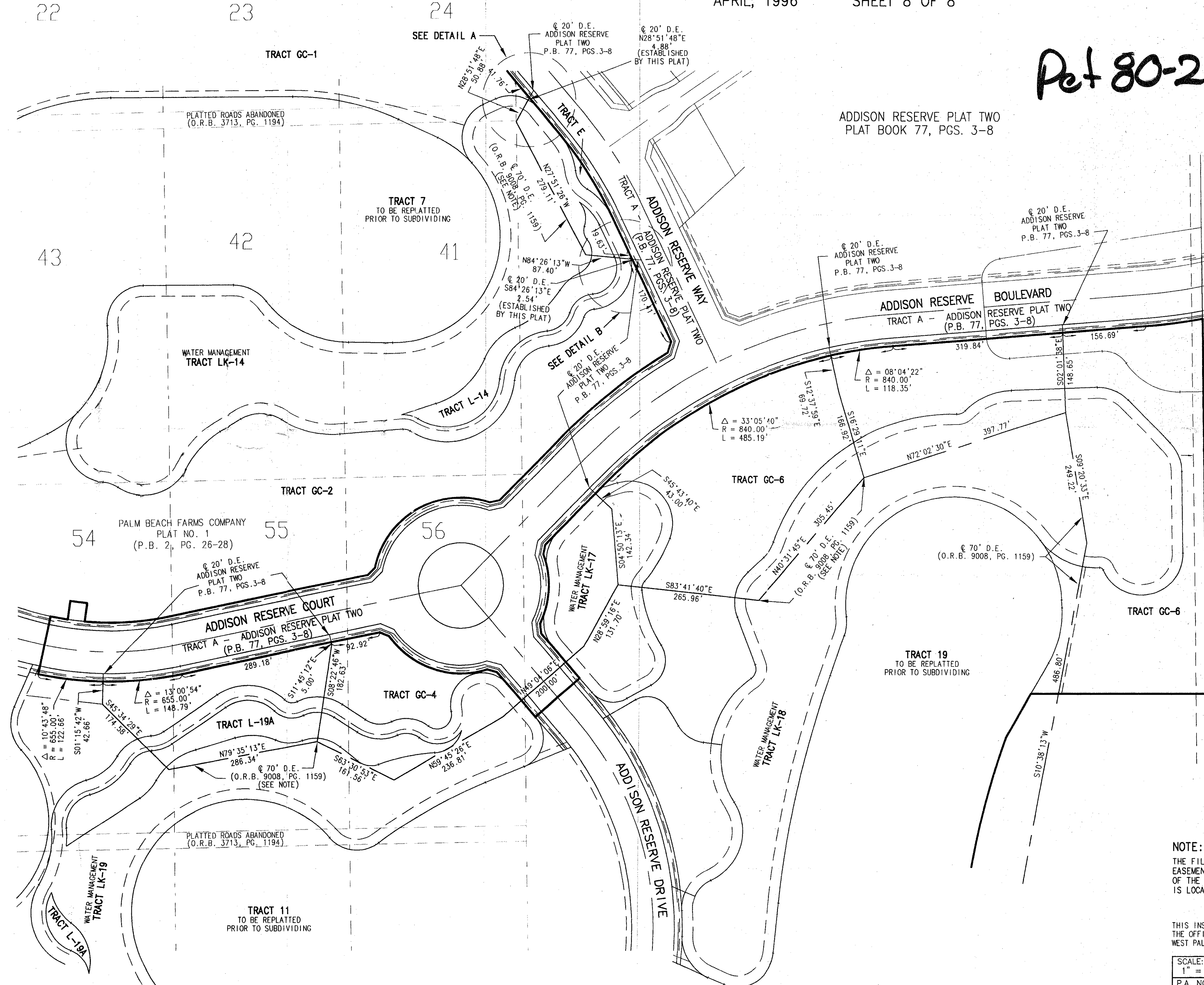
# ADDISON RESERVE PLAT THREE

PART OF GLENEAGLES/POLO CLUB WEST P.U.D.  
 SITUATE IN SECTIONS 21 & 28, TOWNSHIP 46 SOUTH, RANGE 42 EAST  
 AND BEING A PORTION OF "THE PALM BEACH FARMS COMPANY  
 PLAT NO. 1" (P.B. 2, PGS. 26-28)  
 PALM BEACH COUNTY, FLORIDA  
 APRIL, 1996 SHEET 8 OF 8

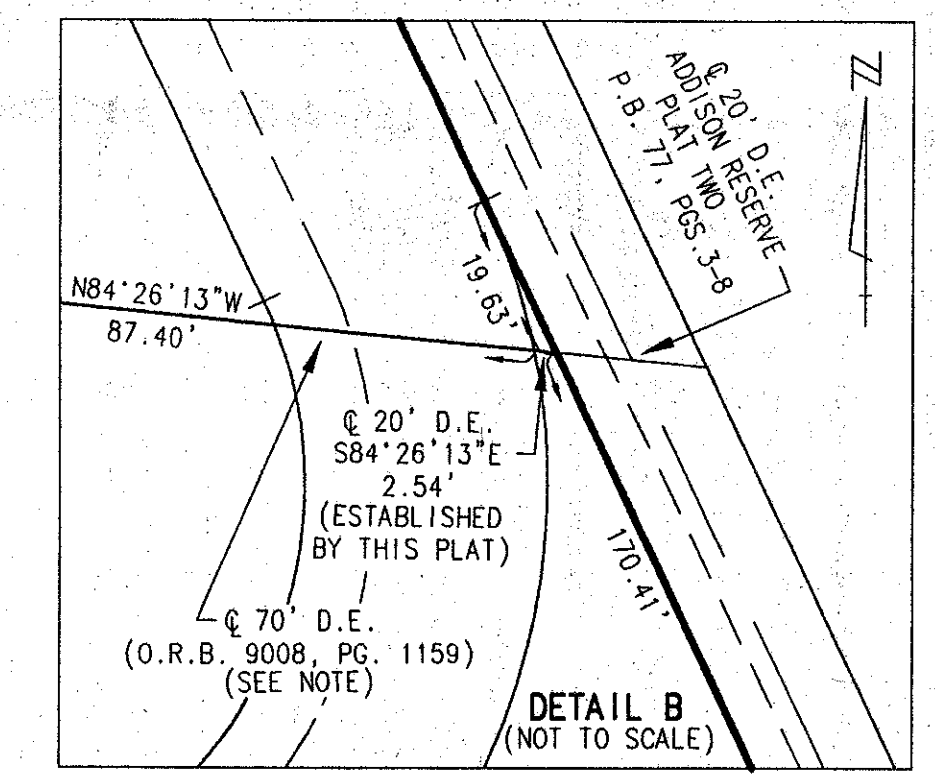
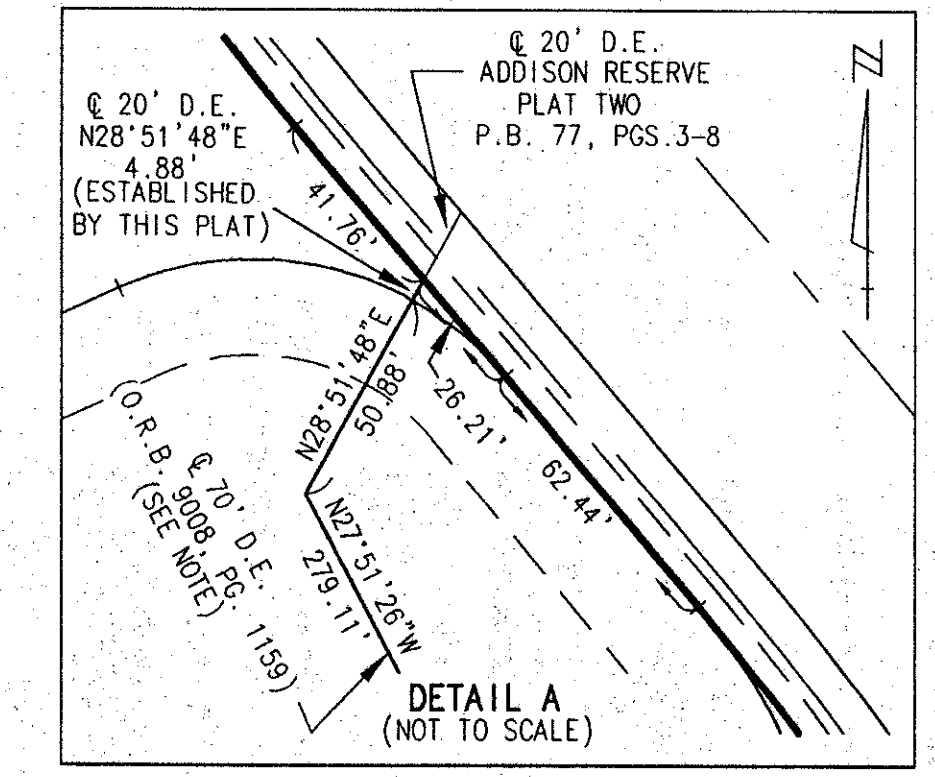


STATE OF FLORIDA  
 COUNTY OF PALM BEACH  
 THIS PLAT WAS FILED FOR  
 RECORD \_\_\_\_\_ DAY OF \_\_\_\_\_  
 AD. 1996 AND DULY RECORDED  
 IN PLAT BOOK \_\_\_\_\_ ON PAGES  
 \_\_\_\_\_ AND \_\_\_\_\_  
 DOROTHY H. WILKEN, CLERK  
 BY: \_\_\_\_\_, D.C.

*Plat 80-215*



SHEET LOCATION MAP  
NOT TO SCALE



- LEGEND**
- B.E. BUFFER EASEMENT
  - Δ CENTRAL (DELTA) ANGLE
  - D.E. DRAINAGE EASEMENT
  - FPL FLORIDA POWER & LIGHT
  - ARC LENGTH
  - L.A.E. LIMITED ACCESS EASEMENT
  - L.E. LANDSCAPE EASEMENT
  - L.M.E. LAKE MAINTENANCE EASEMENT
  - L.M.A.E. LAKE MAINTENANCE ACCESS EASEMENT
  - L.W.D. LAKE WORTH DRAINAGE DISTRICT
  - (NR) NON-RADIAL
  - O.R.B. OFFICIAL RECORD BOOK
  - P.B. PLAT BOOK
  - PG(S) PAGE(S)
  - R RADIUS
  - U.E. UTILITY EASEMENT
  - PERMANENT REFERENCE MONUMENT
  - FOUND PLS# 4763
  - PERMANENT REFERENCE MONUMENT
  - SET PLS# 4763
  - ⊙ PERMANENT CONTROL POINT
  - ⊖ SET PLS# 4763
  - ⊕ CENTERLINE

*7812.*

**NOTE:**  
 THE FILING OF THIS PLAT EXTINGUISHES THAT PORTION OF THE  
 EASEMENT RECORDED IN OFFICIAL RECORD BOOK 9008, PAGE 1159,  
 OF THE PUBLIC RECORDS OF PALM BEACH COUNTY, FLORIDA, WHICH  
 IS LOCATED ON THE PROPERTY SUBJECT TO THIS PLAT.

THIS INSTRUMENT WAS PREPARED BY MARY HANNA CLODFELTER, P.L.S. IN  
 THE OFFICES OF MOCK, ROOS & ASSOCIATES, INC., 5720 CORPORATE WAY,  
 WEST PALM BEACH, FLORIDA 33407.

SCALE:	1" = 100'
P.A. NO.:	94182.26
DATE:	APRIL 1996
DRAWING NO.:	46-42-28-77

**MOCK ROOS**  
 ENGINEERS SURVEYORS PLANNERS  
 5720 Corporate Way, West Palm Beach, Florida 33407  
 (407) 683-3113, fax 478-7248

**ADDISON RESERVE PLAT THREE**  
 PART OF GLENEAGLES/POLO CLUB WEST P.U.D.  
 SITUATE IN SECTIONS 21 & 28, TOWNSHIP 46 SOUTH, RANGE 42 EAST  
 AND BEING A PORTION OF "THE PALM BEACH FARMS COMPANY  
 PLAT NO. 1" (P.B. 2, PGS. 26-28)  
 PALM BEACH COUNTY, FLORIDA

SUBDIVISION *Glenn Eagles Polo Club West*  
 BOOK 78  
 FLOOD ZONE *B*  
 QUAD # *5A*  
 ZONING *RTS*  
 ZIP CODE *33446*  
 PUD NAME *Glenn Eagles Polo Club West*

CAD FILE:  
 TWKCAD11ADDIF07

*0230/020*